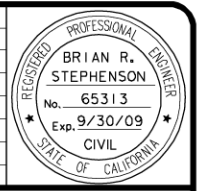
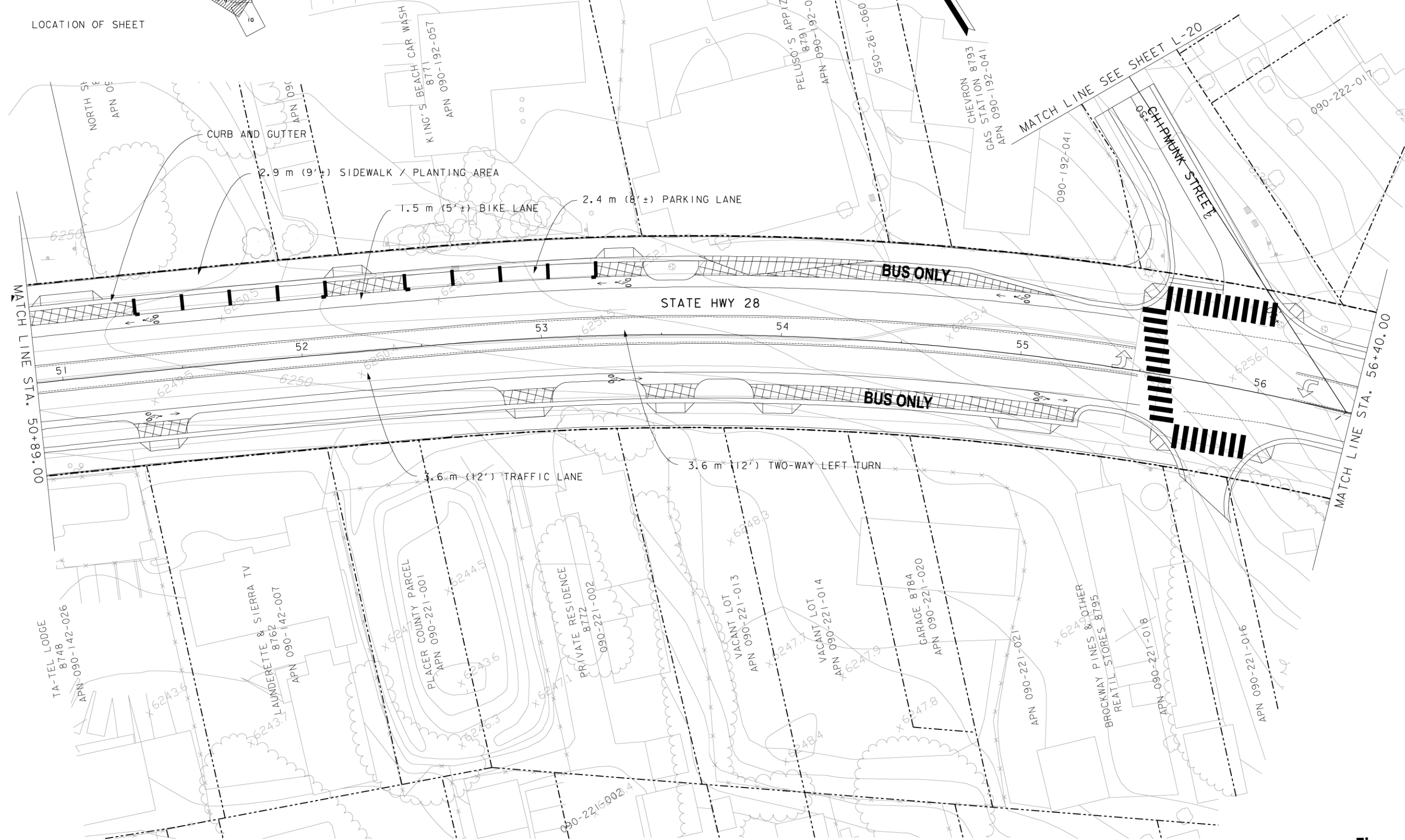


REVISION	DATE	DESCRIPTION AND SHEET NO.	APPROVED BY	DATE



THE COUNTY OF PLACER OR ITS OFFICERS OR AGENTS SHALL NOT BE RESPONSIBLE FOR THE ACCURACY OR COMPLETENESS OF ELECTRONIC COPIES OF THIS PLAN SHEET.

L-9



06676.06 005

Source: Dokken Engineering

FOR REDUCED PLANS ORIGINAL SCALE IS IN INCHES



ALL DIMENSIONS SHOWN IN FEET UNLESS OTHERWISE NOTED

Kings Beach Commercial Core Improvement Project Preferred Alternative: Hybrid Alternative

Figure 2-4

PLAN SCALE: 1" = 20'
 PROFILE SCALE:
 HORIZ:
 VERT:
 DATE: 02/15/08
 DESIGNED:
 DRAWN: 02/15/08
 CHECKED: 02/15/08
 RECORD:
 DRAWING:

CONTRACT NO.
 COUNTY OF PLACER DEPARTMENT OF PUBLIC WORKS
 KINGS BEACH COMMERCIAL CORE IMPROVEMENT PROJECT



COUNTY OF PLACER DEPARTMENT OF PUBLIC WORKS
 KINGS BEACH COMMERCIAL CORE IMPROVEMENT PROJECT

SHEET NO. **11** OF **28**