

# CORNER RECORD

COUNTY OF PLACER T. 16 N R. 16 E M.D.B. & MERIDIAN CALIFORNIA

CORNER TYPE: GOV'T. CORNER  MEANDER  RANCHO  CONTROL  OTHER   
 CORNER IDENTIFICATION - DATE OF VISIT JUNE 8 1989



LOT 2 SQUAW SUMMIT TRACT NO. 589

O MAPS 23

CORNER - LEFT AS FOUND  FOUND AND TAGGED  REESTABLISHED OBLITERATED CORNER  REBUILT

PHYSICAL DESCRIPTION OF CORNER FOUND: EVIDENCE AND METHOD USED TO IDENTIFY OR REESTABLISH

• ~ FND. 1/2" REBAR W/CAP STAMPED R.C.E. 20257

PHYSICAL DESCRIPTION OF MONUMENTS REBUILT OR PERPETUATED

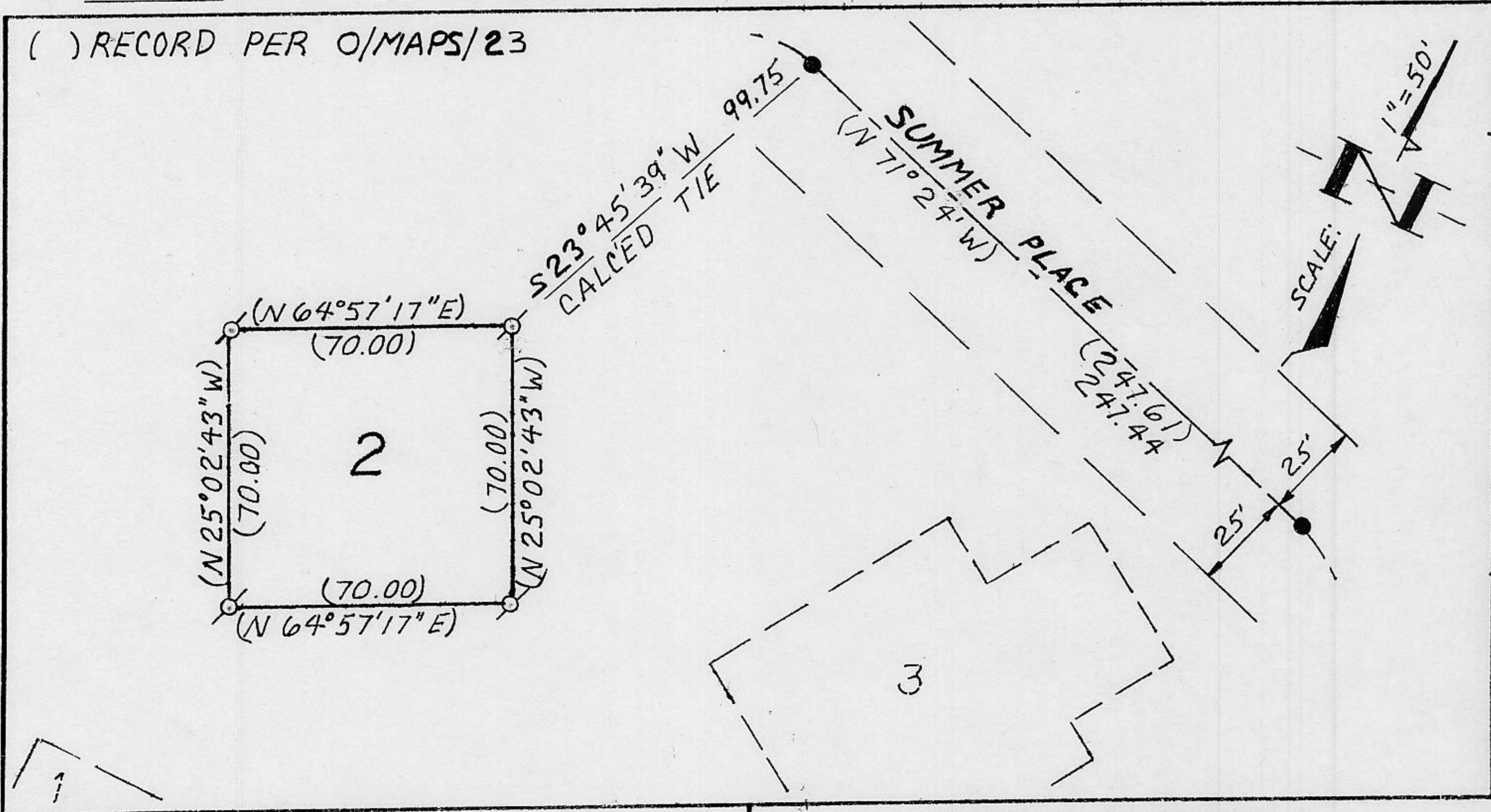
♂ ~ SET 5/8" DIA. REBAR WITH YELLOW PLASTIC CAP STAMPED L.S. 3422

CALIFORNIA COORDINATE SYSTEM ORDER: FIRST  SECOND  THIRD  N/A

STATIONS USED: NGS (USC & GS)  STATE  COUNTY  OTHER  STATION \_\_\_\_\_ STATION \_\_\_\_\_

ZONE \_\_\_\_\_ ELEVATION \_\_\_\_\_ NORTHINGS (Y) \_\_\_\_\_ EASTINGS (X) \_\_\_\_\_

( ) RECORD PER O/MAPS/23

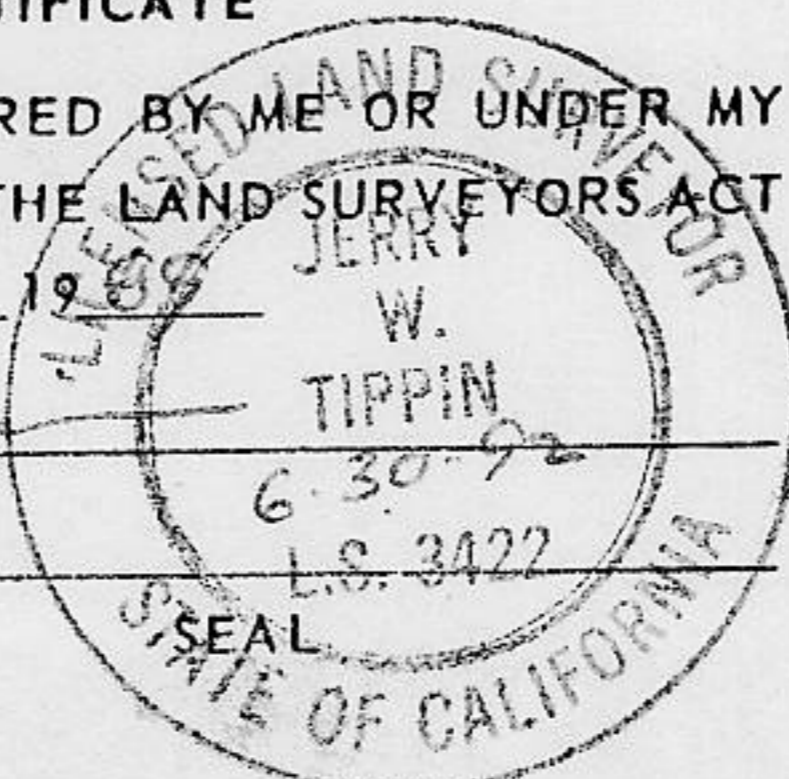


### SURVEYOR'S CERTIFICATE

THIS CORNER RECORD WAS PREPARED BY ME OR UNDER MY DIRECTION IN CONFORMANCE WITH THE LAND SURVEYORS ACT ON JUN 5 1989

SIGNED: Jerry W. Tippin

L.S. or R.C.E. No. L.S. 3422



### COUNTY SURVEYOR'S CERTIFICATE

THIS CORNER RECORD WAS RECEIVED 7/6 1989 AND EXAMINED AND FILED 7/7 1989

BY: John Rubene

TITLE: DEPUTY COUNTY SURVEYOR

DOCUMENT No. \_\_\_\_\_

STATEMENT ON BACK OF SHEET

YES  NO

JN 349.01