

CORNER RECORD

COUNTY OF PLACER T. 11N. R. 7E M.D.B&M MERIDIAN CALIFORNIA

CORNER TYPE: GOVT. CORNER MEANDER RANCHO CONTROL OTHER

CORNER IDENTIFICATION — DATE OF VISIT FEB. 14 1989



PARCEL 2 OF 20 PM 51

CORNER — LEFT AS FOUND FOUND AND TAGGED REESTABLISHED OBLITERATED CORNER REBUILT

PHYSICAL DESCRIPTION OF CORNER FOUND; EVIDENCE AND METHOD USED TO IDENTIFY OR REESTABLISH

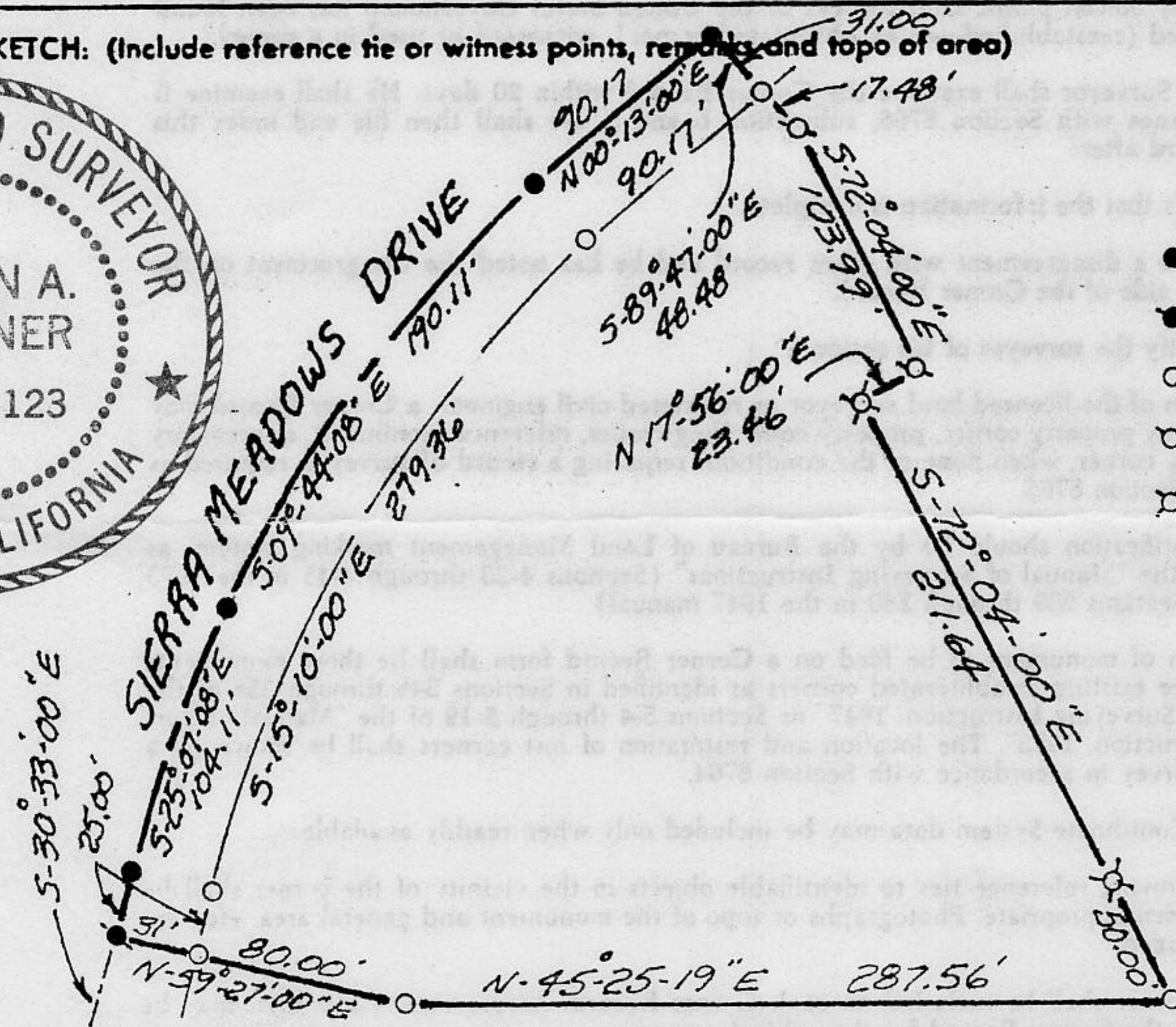
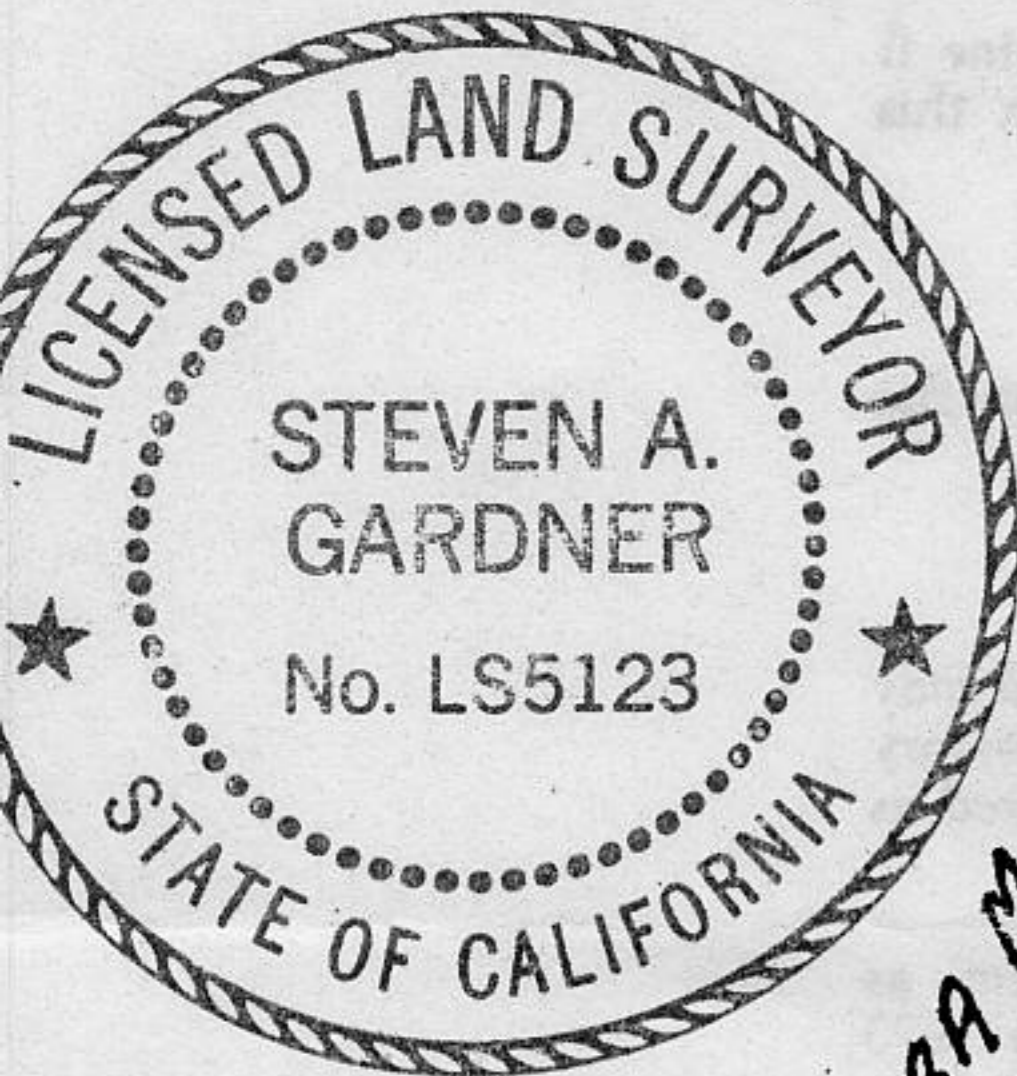
SEE SKETCH

PHYSICAL DESCRIPTION OF MONUMENTS REBUILT OR PERPETUATED

SEE SKETCH

CALIFORNIA COORDINATE SYSTEM ORDER: FIRST SECOND THIRD
 STATIONS USED: NGS (USC & GS) STATE COUNTY OTHER STATION _____ STATION _____
 ZONE _____ ELEVATION _____ NORTHINGS (Y) _____ EASTINGS (X) _____

SKETCH: (Include reference tie or witness points, remarks and topo of area)



LEGEND

- = FND. R.R. SPIKE LS. 3636
- = FND 1" IRON PIN LS. 3636
- = DIMENSION POINT
- ⊙ = SET 3/4" IP. LS 5123
- ⊗ = SET 3" BRASS MON. LS 5123



SURVEYOR'S CERTIFICATE
 THIS CORNER RECORD WAS PREPARED BY ME OR UNDER MY DIRECTION IN CONFORMANCE WITH THE LAND SURVEYORS ACT ON FEB. 14 1989

SIGNED: Steven A. Gardner
 L.S. or R.C.E. No.: LS. 5123
 EXPIRATION DATE 6-30-91
 SEAL

COUNTY SURVEYOR'S CERTIFICATE
 THE CORNER RECORD WAS RECEIVED 3/24 1989
 AND EXAMINED AND FILED 3/24 1989
 BY: John Rydman
 TITLE: DEPUTY COUNTY SURVEYOR

DOCUMENT No. _____
 STATEMENT ON BACK OF SHEET
 YES NO

BOOK 1, CORNER RECORDS, PAGE 172