

CORNER RECORD

COUNTY OF PLACER T. 16 N. R. 17 E. MDM MERIDIAN CALIFORNIA

CORNER TYPE: GOV'T. CORNER MEANDER RANCHO CONTROL OTHER
 CORNER IDENTIFICATION - DATE OF VISIT JUNE 14 1987



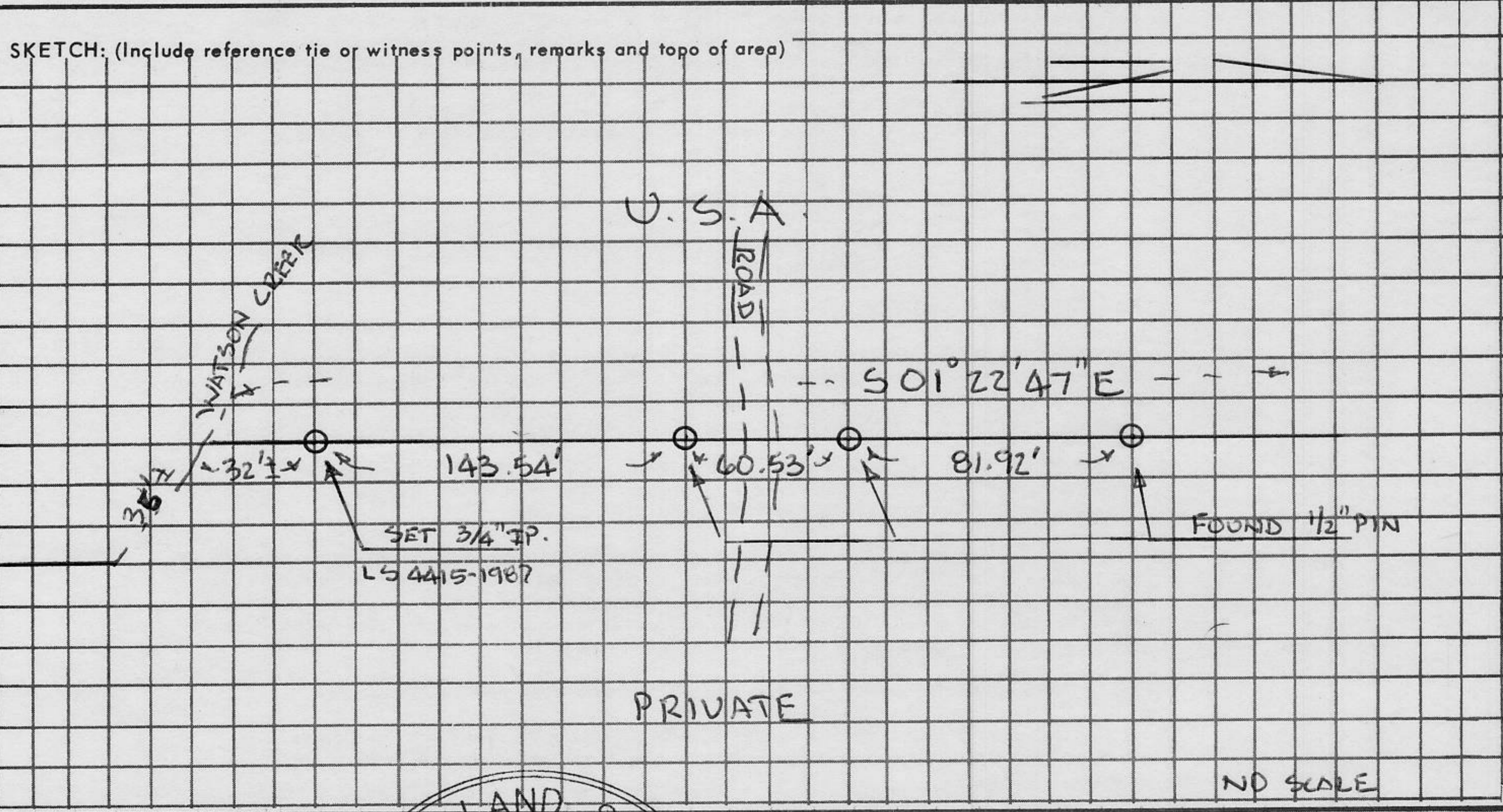
32'± R.P. TO CENTERLINE OF WATSON CREEK AS SHOWN UPON 3 RS 57

CORNER - LEFT AS FOUND FOUND AND TAGGED REESTABLISHED OBLITERATED CORNER REBUILT

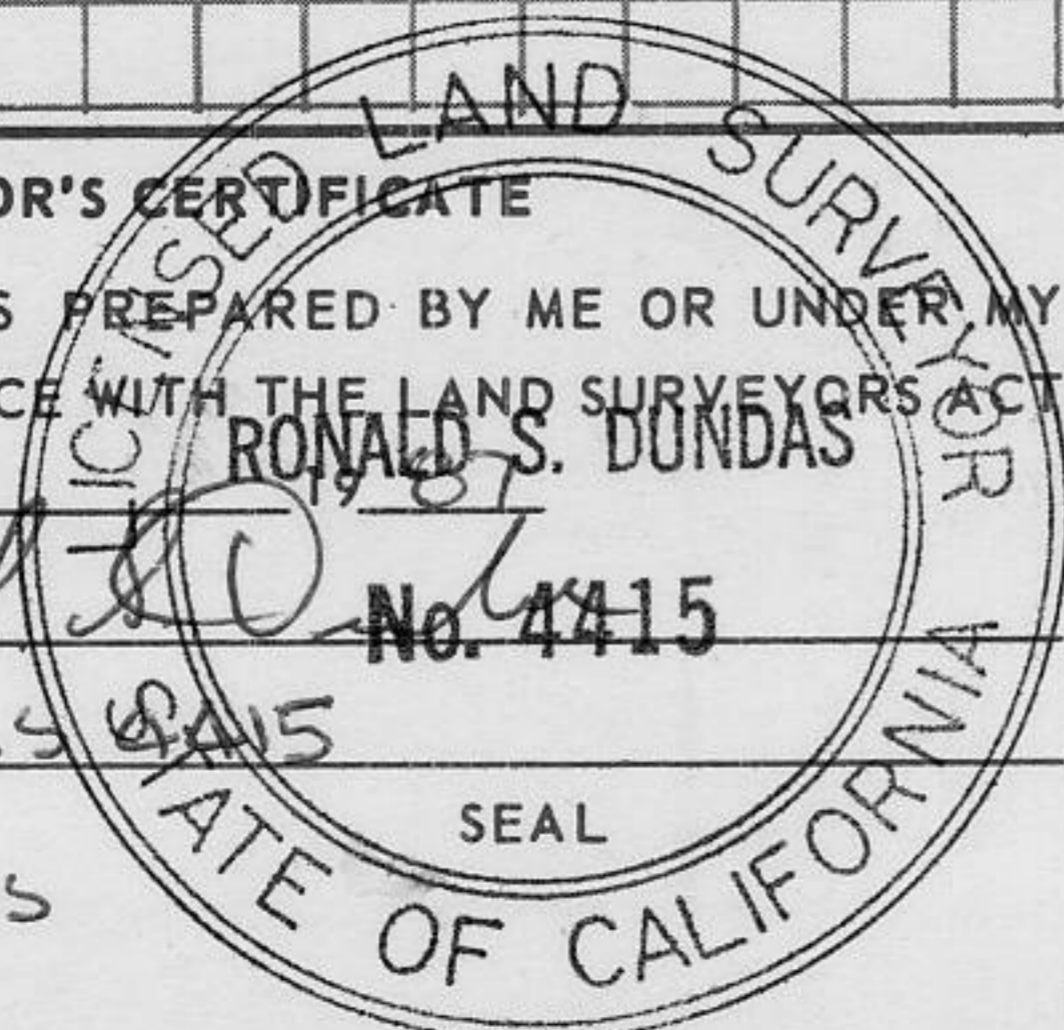
PHYSICAL DESCRIPTION OF CORNER FOUND: EVIDENCE AND METHOD USED TO IDENTIFY OR REESTABLISH
CORNER POSITION WAS DETERMINED BY SURVEY LINE ^{RUN} SOUTHERLY FROM 3 RECOVERED MONUMENTS TO THE NORTH (SEE SKETCH). A WOODEN HUB (ROTTED) WAS FOUND AT THIS POSITION. NO EVIDENCE OF THE 1/2" PIN AS PER 3 RS 57 WAS FOUND. MONUMENTS TO THE NORTH WERE ALL FOUND IN AGREEMENT WITH RECORD (1/2" PINS = 1/2" REBAR)

PHYSICAL DESCRIPTION OF MONUMENTS REBUILT OR PERPETUATED
REPLACED WOODEN HUB WITH 3/4" CAPPED IRON PIPE STAMPED LS 4415-1987. IRON PIPE DRIVEN FUSH TO GROUND AND ROCK MOUND CONSTRUCTED ATOP OF MONUMENT TO PROTECT FROM HIGH WATER FLOODING FROM WATSON CREEK. METAL POST AND U.S.F.S. SIGN PLACED NEXT TO MOUND.

CALIFORNIA COORDINATE SYSTEM ORDER: FIRST SECOND THIRD
 STATIONS USED: NGS (USC & GS) STATE COUNTY OTHER STATION _____ STATION _____
 ZONE _____ ELEVATION _____ NORTHINGS (Y) _____ EASTINGS (X) _____



SURVEYOR'S CERTIFICATE
 THIS CORNER RECORD WAS PREPARED BY ME OR UNDER MY DIRECTION IN CONFORMANCE WITH THE LAND SURVEYORS ACT ON OCTOBER 27 1987
 SIGNED: Ronald S. Dundas No. 4415
 L.S. or R.C.E. No.: LS 4415
 RONALD S. DUNDAS



COUNTY SURVEYOR'S CERTIFICATE
 THIS CORNER RECORD WAS RECEIVED OCT. 30 1987
 AND EXAMINED AND FILED NOV 4 1987
 BY: David M. Dana
 TITLE: DEPUTY COUNTY SURVEYOR
 DOCUMENT No. _____
 STATEMENT ON BACK OF SHEET YES NO

Book 1, Corner Records, Page 151