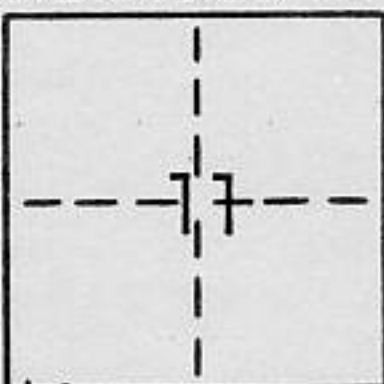


**CORNER RECORD**

COUNTY OF Placer T. 10N R. 6E M.D.M. MERIDIAN CALIFORNIA

CORNER TYPE: GOV'T. CORNER  MEANDER  RANCHO  CONTROL  OTHER  property  
 CORNER IDENTIFICATION - DATE OF VISIT August 8, 1985

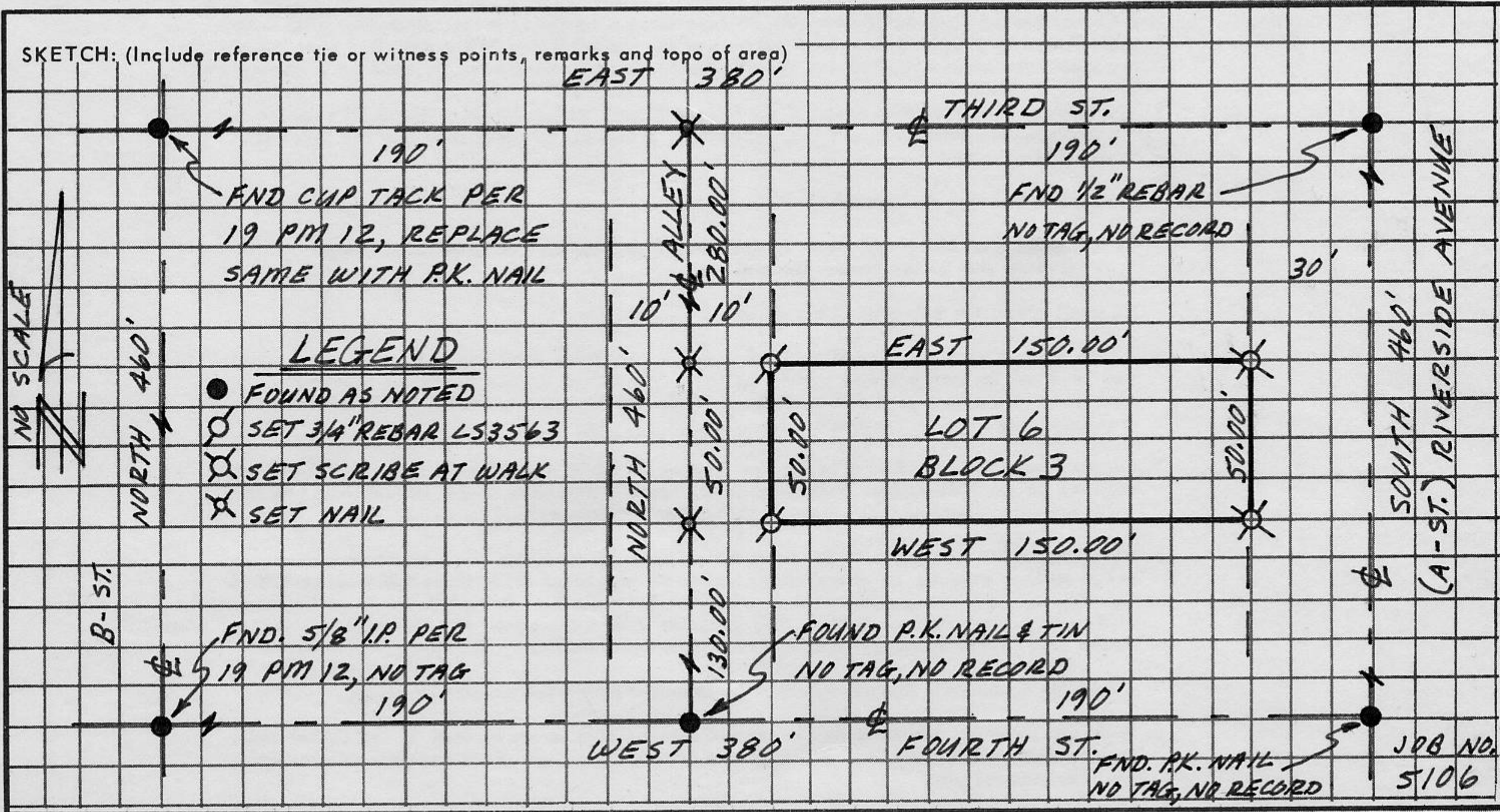


CORNER - LEFT AS FOUND  FOUND AND TAGGED  REESTABLISHED OBLITERATED CORNER  REBUILT

PHYSICAL DESCRIPTION OF CORNER FOUND: EVIDENCE AND METHOD USED TO IDENTIFY OR REESTABLISH  
Found monuments at corners of Block 3, A Maps 42, as noted in sketch

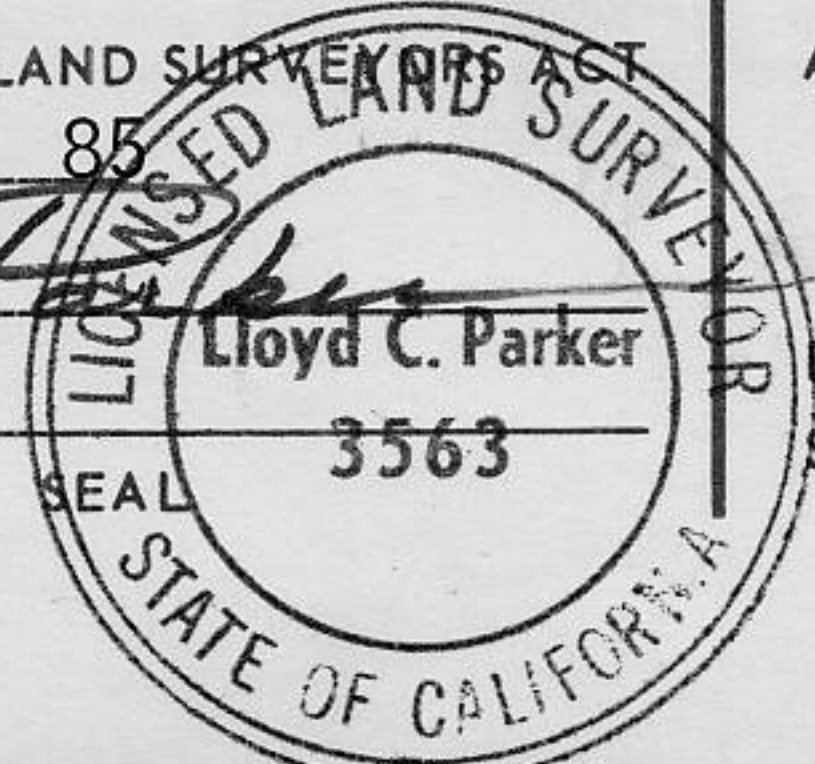
PHYSICAL DESCRIPTION OF MONUMENTS REBUILT OR PERPETUATED  
Set 3/4" rebar tagged L.S. 3563 at corners of Lot 6, Block 3, A Maps 42 (rear)  
set scribe in top back of walk at corners of Lot 6, Block 3, A Maps 42 (front)

CALIFORNIA COORDINATE SYSTEM ORDER: FIRST  SECOND  THIRD   
 STATIONS USED: NGS (USC & GS)  STATE  COUNTY  OTHER  STATION \_\_\_\_\_ STATION \_\_\_\_\_  
 ZONE \_\_\_\_\_ ELEVATION \_\_\_\_\_ NORTHINGS (Y) \_\_\_\_\_ EASTINGS (X) \_\_\_\_\_



**SURVEYOR'S CERTIFICATE**

THIS CORNER RECORD WAS PREPARED BY ME OR UNDER MY DIRECTION IN CONFORMANCE WITH THE LAND SURVEYORS ACT ON September 19 85  
 SIGNED: Lloyd C. Parker  
 L.S. or R.C.E. No.: L.S. 3563



**COUNTY SURVEYOR'S CERTIFICATE**

THIS CORNER RECORD WAS RECEIVED 9/10 19 85  
 AND EXAMINED AND FILED 9/26 19 85  
 BY: Bruce S. McDaniel  
 TITLE: Assistant Surveyor

DOCUMENT No. \_\_\_\_\_  
 STATEMENT ON BACK OF SHEET

YES  NO

Book 1, Corner Records, Page 123