



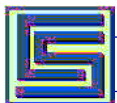
Appendix I - Existing Detention Basins

I.1 Introduction

Various local detention basins have been constructed to mitigate the increase of runoff flows due to development. A summary of the local detention basins constructed in the Dry Creek watershed is listed in Table I.1. Plate I1 shows the locations of the basins.

Table I.1 Local Detention Basins in the Dry Creek Watershed

I.D.	PROJECT NAME	LOCATION	JURISDICTION	SUB-WATERSHED	100-YEAR STORAGE (ac-ft)	100-yr PEAK FLOW REDUCTION (cfs) ¹	COMMENTS
1A	Bayside Covenant Church	Sierra College Blvd	Placer	Strap Ravine	0.078	5	Peak flow reduction at project boundary
1B	Bayside Covenant Church	Olympus Drive	Placer	Miners Ravine	1.160	0	Peak flow reduction at SCB
2	Clover Valley Lakes	Private property	Rocklin	Clover Valley Creek	47.700	106	Peak flow reduction at project boundary
3	Alexandria Estates	Douglas Blvd/Barton Rd	Placer	Strap Ravine		12	Peak flow reduction at Douglas Blvd.
4	Granite Rose	APN 048-030-063	Placer	Strap Ravine	0.012	1	Peak flow reduction at project boundary
5	Woodcreek West	Baseline Road/Crowder	Roseville	Dry Creek	4.000	16	
6	Miners Creek	036-085-043	Placer	Miners Ravine	1.000	15	Peak flow reduction at project boundary



I.D.	PROJECT NAME	LOCATION	JURISDICTION	SUB-WATERSHED	100-YEAR STORAGE (ac-ft)	100-yr PEAK FLOW REDUCTION (cfs) ¹	COMMENTS
7	Sasaki Subdivision		Rocklin	Secret Ravine	1.780	34	Peak flow reduction at project boundary
8	Granite Lakes Estates		Rocklin	Secret Ravine	3.200	104	Peak flow reduction at Secret Ravine
9	Winterhawk Subdivision	046-131-001	Placer	Miners Ravine	3.700	94	Peak flow reduction at project boundary
10	Stonebrook Subdivision	048-301-045	Placer	Miners Ravine	0.200	18	Not found
11	Bella Terra Subdivision	Barton Rd	Placer	Strap Ravine	0.6	12	Peak flow reduction at project boundary
12	Folsom Ready Mix	Del Road	Placer	Dry Creek	0.206	8	Peak flow reduction at project boundary
13	East Parkway Bible Church	East Roseville Pkwy	Placer	Dry Creek	0.195	5	Peak flow reduction at project boundary
14	Granite Bay Kovar Karate	Douglas Blvd	Placer	Dry Creek	0.044	3	Peak flow reduction at project boundary
15	Seymour Ranch	Cavitt-Stallman Rd	Placer	Strap Ravine	0.534	12	Peak flow reduction at project boundary
16	(not used)						



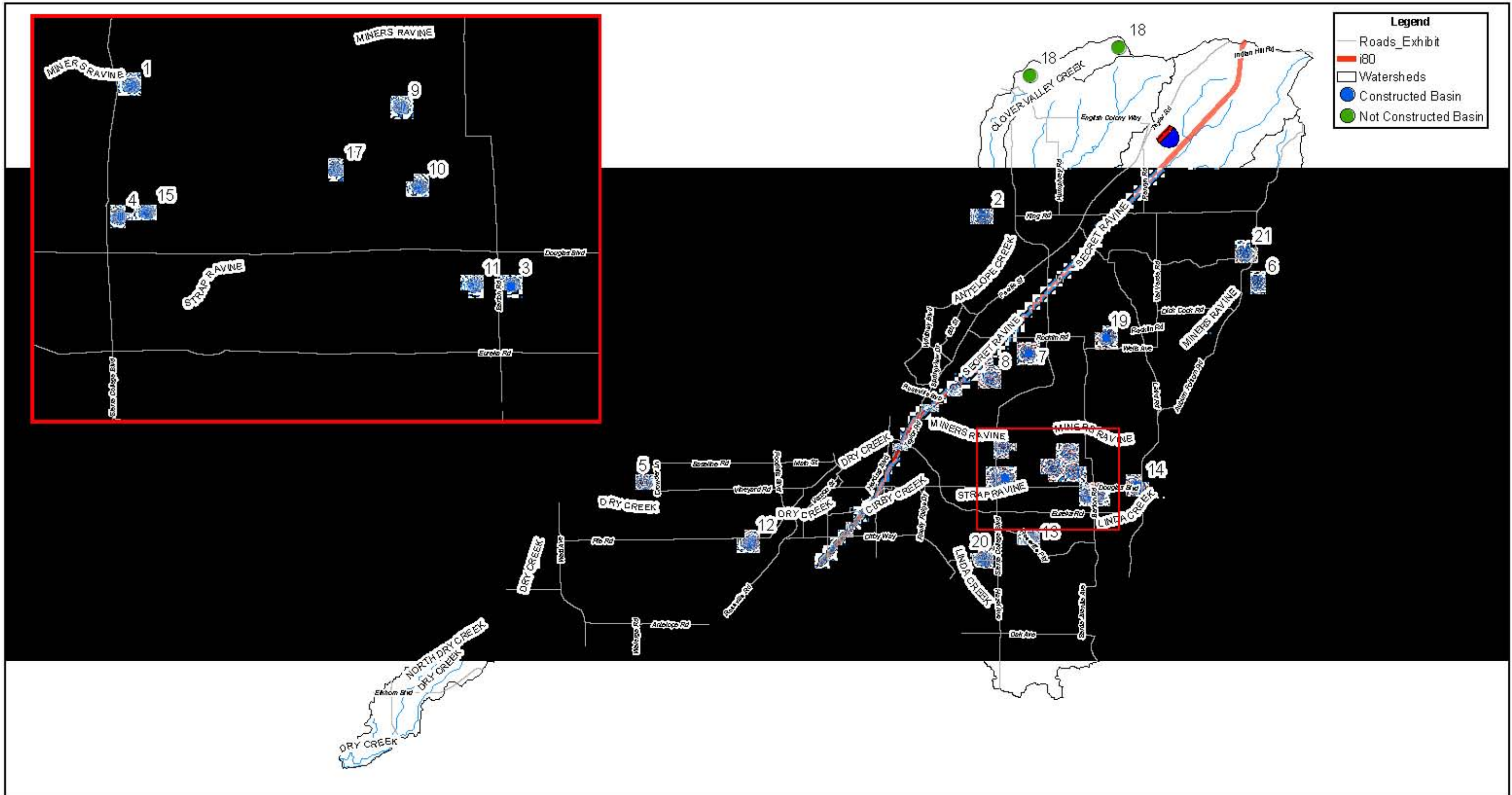
I.D.	PROJECT NAME	LOCATION	JURISDICTION	SUB-WATERSHED	100-YEAR STORAGE (ac-ft)	100-yr PEAK FLOW REDUCTION (cfs) ¹	COMMENTS
17	Douglas Ranch	460-210-001	Placer	Strap Ravine	8.300	89	Peak flow reduction at project boundary
18	Bickford Ranch	Sierra College Blvd / Hwy 193	Placer	Clover Valley Creek	11.150	22 (planned)	Peak flow reduction at Caperton Res.
19	Loomis Hills Estates		Loomis	Secret Ravine		52	Peak flow reduction at project boundary
20	Woodbridge Estates	Martella Lane	Placer	Linda Creek	0.230	7	Peak flow reduction at project boundary
21	Maggi Country Estates	Auburn Folsom Road	Placer	Miners Ravine	2.000	36	Peak flow reduction at project boundary
	Total Peak Flow Reduction: ²				86.089	651	

¹Peak flow reduction values are based on reported values and have not been verified.

²The 1992 Plan included a flow reduction goal at build-out of 1,124cfs at project boundaries.



DRY CREEK WATERSHED LOCAL DETENTION BASINS



PLACER COUNTY FLOOD CONTROL AND WATER CONSERVATION DISTRICT

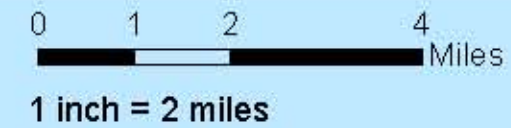


PLATE I1