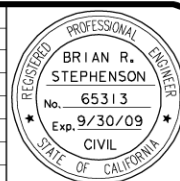


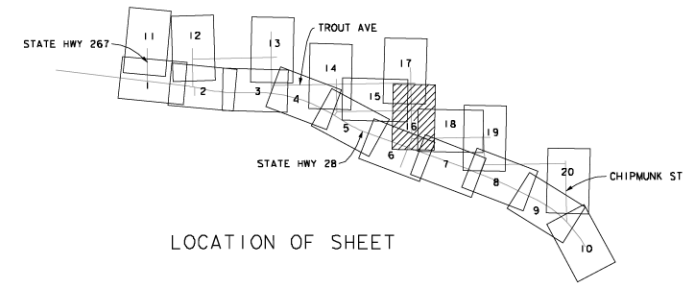
\* OFF STREET PARKING STALLS TO BE POROUS CONCRETE

REVISION	DATE	DESCRIPTION AND SHEET NO.	APPROVED BY	DATE

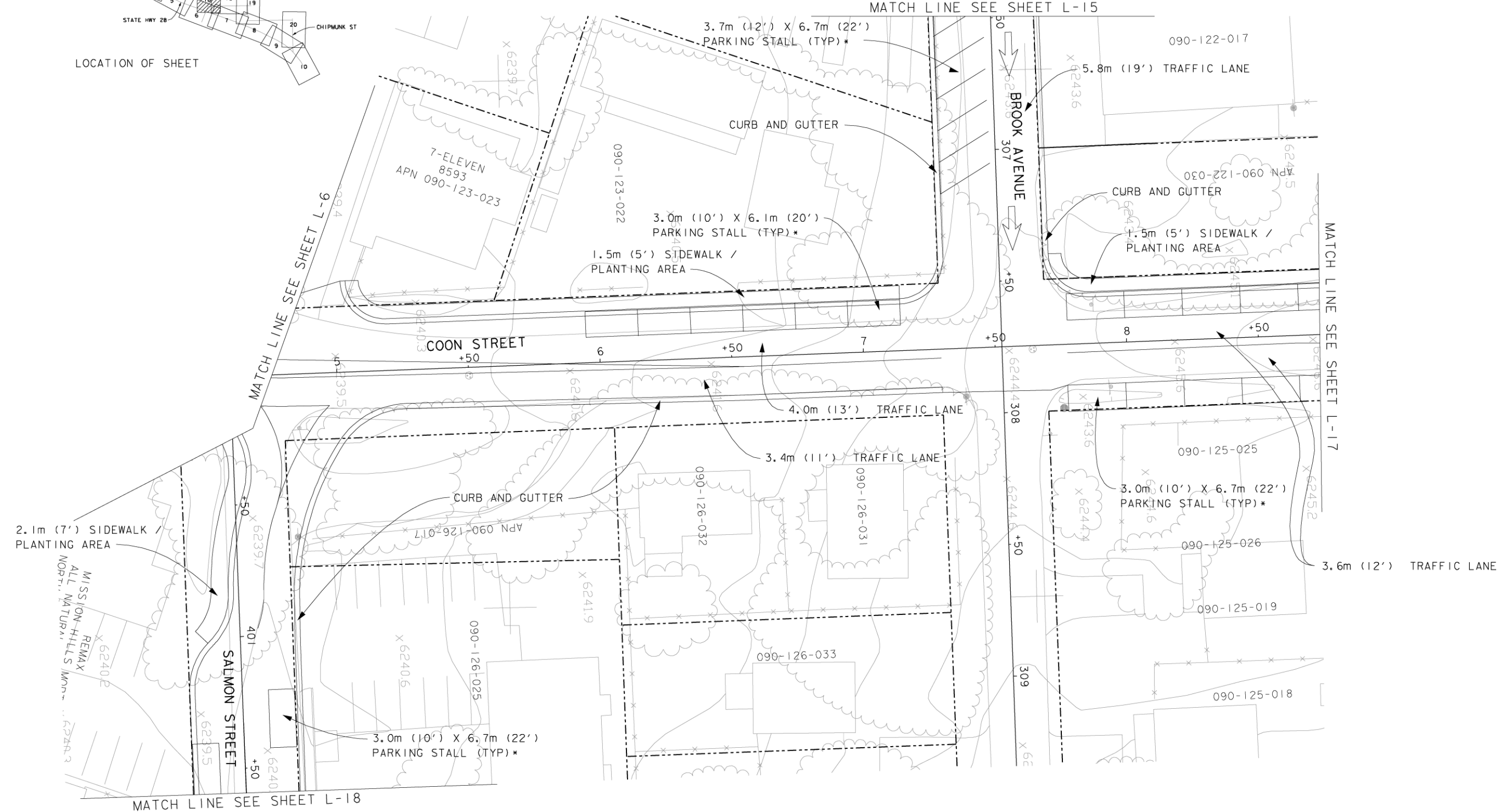


THE COUNTY OF PLACER OR ITS OFFICERS OR AGENTS SHALL NOT BE RESPONSIBLE FOR THE ACCURACY OR COMPLETENESS OF ELECTRONIC COPIES OF THIS PLAN SHEET.

PLAN SCALE: 1"=20'  
 PROFILE SCALE:  
 HORIZ. SCALE:  
 VERT. SCALE:



**L-16**



500.9079.9960

Source: Dokken Engineering

FOR REDUCED PLANS  
 ORIGINAL SCALE IS IN INCHES



ALL DIMENSIONS SHOWN IN FEET  
 UNLESS OTHERWISE NOTED

**Kings Beach Commercial Core Improvement Project Preferred Alternative: Hybrid Alternative**

**Figure 2-4**

SHEET NO.  
**18**  
 OF  
**28**

COUNTY OF PLACER DEPARTMENT OF PUBLIC WORKS  
 KINGS BEACH COMMERCIAL CORE IMPROVEMENT PROJECT

DESIGNED: 02/15/08  
 DRAWN: 02/15/08  
 CHECKED: 02/15/08  
 RECORD: 02/15/08  
 DRAWING:

CONTRACT NO.

DATE: 02/15/08